

BRIDGESTONE

OFF-THE-ROAD TYRES FOR KOMATSU

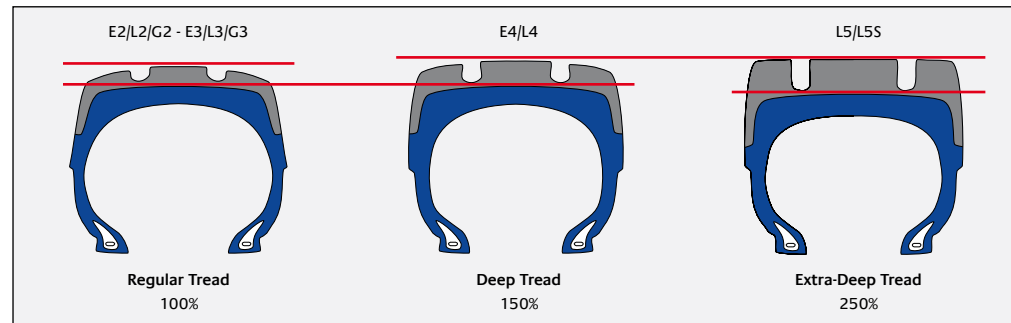


 | Compact & Medium Loaders 4 - 7

 | Rigid Dump Trucks 8 - 9

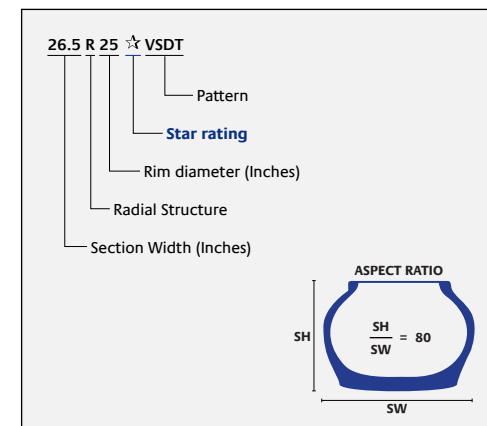
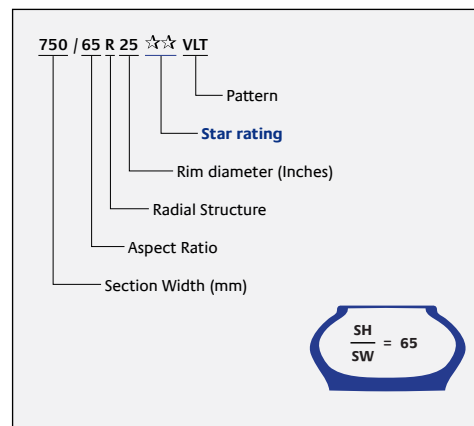
 | Articulated Dump Trucks 10

Tyre tread classification by TRA





65" series benefits / purpose -vs. 80"

Lower ground pressure for better flotation on muddy and soft ground, and reduced ground damage.



Legend

 Bridgestone tyre is homologated by Komatsu for related machine but might not be listed in Komatsu product documentation. Please contact the appropriate Komatsu account coordinator.

 Bridgestone tyre is available for related machine as replacement but not homologated as OE fitment.



Pattern				VSW	VLT	VJT	VTS
Tread depth				Standard	Standard	Standard	Standard
Characteristics				Snow operation	Flotation on muddy surface	High total performance	High total performance
Recommended ground surface							
Machine Model	Tyre Size	Front kPa	Rear kPa	L2	L3	L3	L3
WA200-7	17.5 R25	475	225	*		*	
	20.5 R25	325	200	MS	*	*	
	650/65 R25	275	200				*
WA250PZ-6	20.5 R25	350	200	MS	*	*	
	650/65 R25	300	200				*
WA270-7	20.5 R25	375	200	MS	*	*	
	650/65 R25	325	200				*
WA320-6	20.5 R25	450	225	MS	*	*	
WA320PZ-6	650/65 R25	375	225				*
WA320-7	650/65 R25	375	225				*
WA380-7	23.5 R25	450	225	MS	MS	*	
WA430-6	23.5 R25	450	225	MS	MS	*	
WA470-7	26.5 R25	450	250			*	
WA470-8	775/65 R29	400	225				*
WA480LC-6	26.5 R25	500	300			*	
	775/65 R29	400	250				*
WA500-7	29.5 R25	575	350		MS	*	
WA500-8	29.5 R25	575	350		MS	*	
WA600-6	36/65 R33	750	500				
WA600-8	36/65 R33	750	500				
WA800-3	45/65 R45	675	500				
WA900-3	45/65 R45	700	500				



Pattern							VSNT	VLTS	VSNL	VS DT	VSDL	VS DR	VSMS
Tread depth							Deep	Deep	Deep	Extra-Deep	Extra-Deep	Extra-Deep	Extra-Deep
Characteristics							Traction	Traction	Rock	Traction	Rock	Rock	Smooth
Recommended ground surface													
Machine Model	Tyre Size	Front kPa	Rear kPa	L4	L4	L4	L5	L5	L5	L5	L5	L5	
WA200-7	17.5 R25	475	225					*	**			**	
	20.5 R25	325	200		MS			**	**				
WA250PZ-6	20.5 R25	350	200		MS			**	**				
	650/65 R25	300	200										
WA270-7	20.5 R25	375	200		MS			**	**				
	650/65 R25	325	200										
WA320-6	20.5 R25	450	225		MS			**	**				
WA320PZ-6	650/65 R25	375	225										
WA320-7	650/65 R25	375	225										
WA380-7	23.5 R25	450	225		MS		**	**	**	**			
WA430-6	23.5 R25	450	225		MS		**	**	**	**			
WA470-7	26.5 R25	450	250				**	**	**	**		**	
WA470-8	775/65 R29	400	225										
WA480LC-6	26.5 R25	500	300				**	**	**	**		**	
	775/65 R29	400	250										
WA500-7	29.5 R25	575	350				**	**	**	**			
WA500-8	29.5 R25	575	350				**	**	**	**			
WA600-6	36/65 R33	750	500				**	**	**	**			
WA600-8	36/65 R33	750	500				**	**	**	**			
WA800-3	45/65 R45	675	500							**			
WA900-3	45/65 R45	700	500				**	**	**	**			

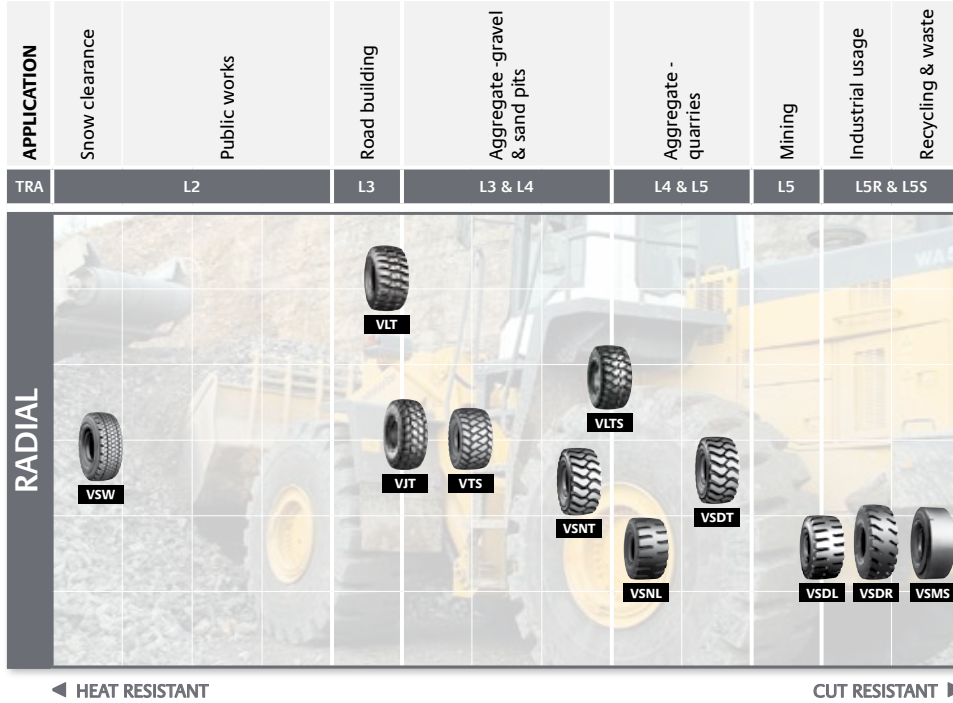
Komatsu approved fitment

Star Rating (*): Indicates the load capacity of a radial tyre at a given inflation pressure.
Multiple Star (MS) Rating: This refers to Bridgestone radial tyres with both markings "LOADER & DOZER * (one star)" and "EARTHMOVING ** (two star)". Those tyres can be used for both applications under their specific related load capacity and speed, meaning * (one star) is applicable on LOADER & DOZER and ** (two star) is applicable on ARTICULATED DUMP TRUCK.

The indicated air-pressures are recommended for standard machines.
 For any clarification or advice on suitable pressures for non-standard or additional application, please contact your Bridgestone representative.



Application



VSW L2



Tyre developed for machines employed in snow clearance work. It has excellent traction as well as excellent cornering and braking performance, especially on icy, packed or soft snow surfaces. It also provides all season services.

VLT L3



Suitable on wet, soft and muddy surfaces with excellent manoeuvrability, traction and flotation. It offers a comfortable ride due to its superb stability.

VJT L3



Offers great productivity value thanks to its low vibration level, high stability and good soil traction. It meets the needs of the tough working conditions required by today's quarrying and construction industries.

VTS L3



This new generation of tyre offers an exceptional stability with its wider contact surface, a superior driving comfort, an optimum traction and selfcleaning.

VSNT L4



Deep tread tyre suitable for tough quarry, mining or handling sites. It provides optimum traction without compromising the tread life and the riding comfort.

VLTS L4



Particularily suitable for rocky and abrasive conditions with superior traction, even in muddy conditions. It also offers good handling and comfort on hard packed surfaces. It has a long tread life and an excellent cut resistance.

VSNL L4



Designed for underground mining, also suitable for wheel loaders working in open pits and quarries. The rock pattern design offers outstanding traction, stability and comfort. And the sidewall protectors reduce cuts and other damages.

VSDT L5



Extra deep tyre, excellent for most severe quarry face operations where traction is of utmost importance. It maintains a high traction level even when it is 75% worn. Designed to optimise traction and reduce tread and sidewall cuts, resulting in a longer tyre life.

VSDL L5



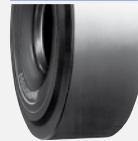
Extra deep tread designed for severe and rocky surfaces guarantees good traction, stability and a comfortable ride. The VSDL is perfect for heavyduty operations in open pits, quarries and underground mines. The sidewall provides extended protection from cutting.

VSDR L5



Extra deep rigid pattern for the most extreme operations. The high-volume, long-life tread and superior construction result in superior cut resistance and long tyre-life. Specially designed sidewall provides extended protection from cutting.

VSMS L5S



Smooth extra deep tread tyre (L5S) designed for operations on severe rocky surfaces and in underground mines, open pits and quarries. Its special compound ensures a maximum resistance to cutting and wearing.



Pattern				VMTP	VRLS	VELS
Tread depth				Deep	Deep	Deep
Characteristics				Muddy & Soft	Rock	Rock
Recommended ground surface						
Machine Model	Tyre Size	Front kPa	Rear kPa	E4	E4	E4
HD325-7	18.00 R33	800	750	E2A LS		E2A - E2A LS
HD405-7	18.00 R33	800	800	E2A LS		E2A - E2A LS
HD465-7	24.00 R35	600	650	E2A - E2A LS	E1A - E3A	E2A - E2A LS
HD605-7	24.00 R35	700	750	E2A - E2A LS	E1A - E3A	E2A - E2A LS
HD785-7	27.00 R49	700	750	E2A LS	E1A - E2A E2A S2 - E3A	


Komatsu approved fitment

The indicated air-pressures are recommended for standard machines.
For any clarification or advice on suitable pressures for non-standard or additional application, please contact your Bridgestone representative.




VREP	VRDP	VRQP
Deep-Premium	Deep-Premium	Deep-Premium
Rock	Rock	Rock
E4	E4	E4
		E2A - E2A LS
		E2A - E2A LS
		E2A - E2A LS
		E2A - E2A LS
E2A LS	E2A LS	

VMTP **E4**




Non-directional extra deep tread pattern. High cut resistance and superior traction with side slip resistance. Perfect for severe mining, quarrying and construction operations.

VRLS **E4**




Used for severe rock and abrasive earthmoving operations. Special rubber compound for arduous environments, sidewall protectors and high resistance to cuts and chipping.

VELS **E4**




Deep tread pattern with sidewall protectors. For abrasive roads such as rocky gravel or packed surfaces. Highly resistant to cutting, chipping and shock damage.

VREP **E4**




Developed for rigid dump trucks operating in heavy-duty mining operations. The rigid pattern reduces internal friction and heat generation. An innovative lug-design increases stability and driving-comfort. Superior liability for greater productivity.

VRDP **E4**



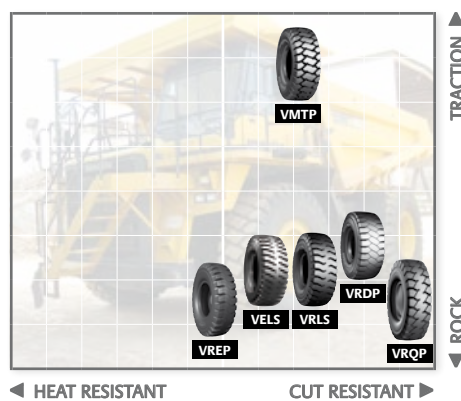
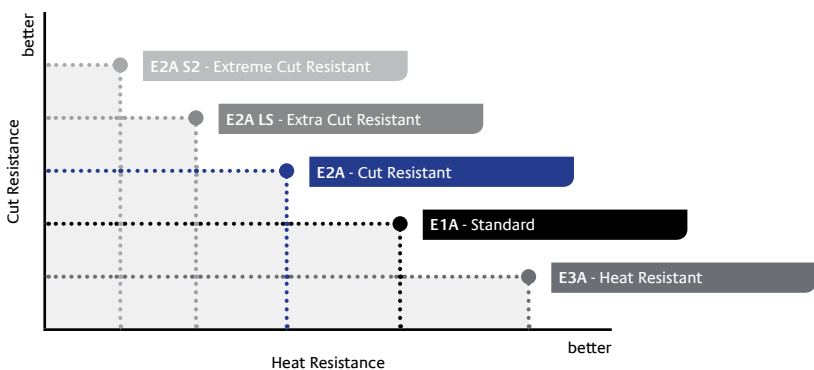
Rock extra-deep tread pattern with sidewall protectors. Designed for giant rigid dump trucks. Can be used on abrasive or rocky road surface thanks to super cut resistance without compromising resistance to heat.

VRQP **E4**



Developed for rigid dump trucks operating in severe conditions, especially quarrying. Excellent combination of long life, high cut resistance and advanced grip.

Compound Designation



BRIDGESTONE BELUX NV/SA

Kleine Kloosterstraat 10 - 1932 Zaventem, België

RCS Mechelen n. 0404.954.610

www.bridgestone.be

BRIDGESTONE NEDERLAND B.V.

Verryn Stuartlaan 44 - 2288 EN Rijswijk, Nederland

K.v.K 20079162

www.bridgestone.nl



The information contained in this publication is for guidance purposes only. Whilst every effort has been made in its production, no responsibility can be accepted for any loss or damage arising from any undetected error. Any data supplied is subject to possible revision following the date of publication. Realisation: Unides • BS OTR BSEU - 02 / 16 - 1004306