

MICHELIN® XMINE® D2 LC **MOVE LONGER, MOVE FASTER.**



**A NEW COMPOUND TO IMPROVE
YOUR PRODUCTIVITY**

**ROBUST TREAD DESIGN
FOR OPTIMIZED TIRE
LIFE**



MICHELIN

A better way forward

MICHELIN® XMINE® D2 LC L5 50/65 R 51

**MOVE LONGER,
MOVE FASTER.**



A NEW COMPOUND TO IMPROVE YOUR PRODUCTIVITY

■ The new MICHELIN® XMINE® D2 LC compound reduces the temperature of the tire in order to move faster.

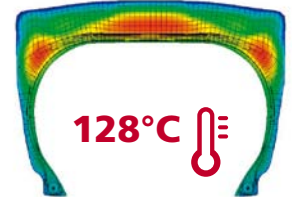
■ MICHELIN® XMINE® D2 SR

6KM DISTANCE PER HOUR

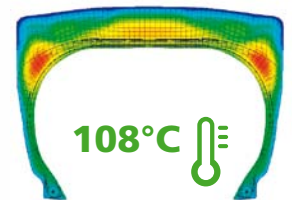
■ MICHELIN® XMINE® D2 LC

10KM DISTANCE PER HOUR

+66%
OF DISTANCE
PER HOUR



MICHELIN® XMINE® D2 SR
at 10 km distance per hour



MICHELIN® XMINE® D2 LC
at 10 km distance per hour



ROBUST TREAD DESIGN FOR OPTIMIZED TIRE LIFE

- Resistance to shock ruptures, cuts and tread tearing thanks to a substantial crown, robust shoulders reinforced and a protection band.
- Resistance to punctures thanks to a resilient casing and several specific steel belts.



50/65 R 51 MICHELIN® XMINE® D2 LC L5 ** CAI 508706

Serviceplan I Michelin RCS 855 200 507 Clermont Ferrand - Photos credits: Michelin, iStock - February 2016



More information: www.michelinearthmover.com
Michelin Earthmover Youtube